



测试报告 (Test Report) 报告编号(NO.): MOCKONJJ56902704 签发日期(Issued Date): 2020-12-22 Page 1 of 3

委托单位 Applicant:

地址 Address:

委托单位提供样品信息如下:

The following sample(s) was/were submitted and identified on behalf of the client as:

样品名称 Sample Name: 锂锰扣式电池 Li-MnO₂.Button cell)
样品型号 Sample Model: CR2032(测试款 Test Model), CR927, CR1130, CR1212, CR1220, CR1216, CR1225, CR1025, CR1530, CR1616, CR1620, CR1625, CR1632, CR2016, CR2020, CR2025, CR2050, CR2320, CR2325, CR2330, CR2332, CR2354, CR2430, CR2450, CR2477, CR3032, CR3832, CR3048

样品接收日期 Sample Receive Date: 2020-12-16
样品测试日期 Testing Period: 2020-12-16 ~ 2020-12-22

参考要求: 2006/66/EC&2013/56/EU 指令
Reference Requested: Directive 2006/66/EC&2013/56/EU

参考方法: (1) IEC62321-5 Edition 1.0:2013,用原子吸收光谱仪测定铅的含量
Reference Method: IEC62321-5 Edition 1.0:2013, Lead Analysis is performed by AAS
(2) IEC62321-5 Edition 1.0:2013,用原子吸收光谱仪测定镉的含量
IEC62321-5 Edition 1.0:2013, Cadmium Analysis is performed by AAS
(3) IEC 62321-4:2013+AMD1:2017 CSV, 用电感耦合等离子体发射光谱仪测定汞的含量
IEC 62321-4:2013+AMD1:2017 CSV, Mercury Analysis is performed by ICP-OES

测试结果 Testing Results: 请参见下页 Please refer to next page(s)

批准人 Approved by:

毛相青



微信扫一扫，使用小程序 小程序扫一扫，在线验证

Code: 2rnwtyw7e



Hotline 400-819-5688
www.ponytest.com
SZ-DZBGMB-105-3-2020A

谱尼测试集团深圳有限公司

公司地址: 深圳市宝安区福海街道桥头社区永和路鑫豪盛工业园1栋、2栋3层
检测地址: 深圳市宝安区福海街道桥头社区永和路鑫豪盛工业园1栋、2栋3层

电话: 0755-26050909
传真: 0755-26068336



测试报告 (Test Report) 报告编号(NO.): MOCKONJJ56902704 签发日期(Issued Date): 2020-12-22 Page 2 of 3

测试结果 Test Results (Unit: %)

测试项目 Test Item	方法检出限 MDL	测试结果 Test Result	限量 Limit
铅 (Lead)	0.0005	0.0014	0.004
镉 (Cadmium)	0.0001	未检出 (N.D.)	0.002
汞 (Mercury)	0.0001	未检出 (N.D.)	0.0005

备注 Note: (1) % = 重量百分比 Percentage by Weight

(2) N.D. = 未检出 Not Detected (<MDL)

(3) MDL = 方法检出限 Method Detection Limit

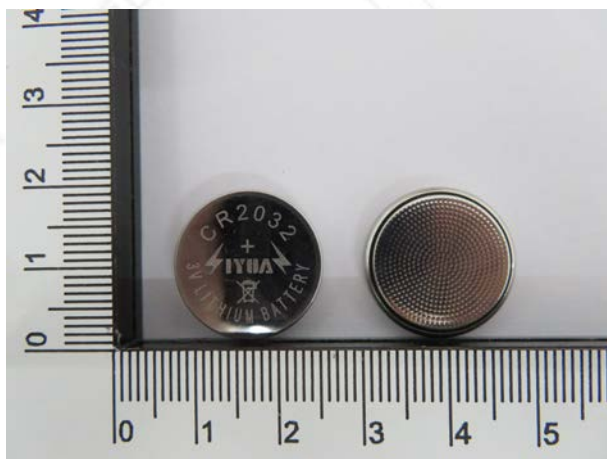
注意 Remark:

根据 2006/66/EC&2013/56/EU 指令第 21(3) 相关章节, 凡是含汞超过 0.0005%、镉超过 0.002%或铅超过 0.004%的电池、蓄电池和钮扣电池均应含有描述重金属含量的标志。

According to the Article 21(3) of Directive 2006/66/EC&2013/56/EU, Battery, Accumulator and Button cell shall include the chemical Symbol Mercury when containing more than 0.0005% of Hg, the chemical symbol Cadmium when containing more than 0.002% of Cd and the chemical symbol Pb when containing more than 0.004% of Pb.

样品编号和照片 Sample No. & Photo:

J56902704



仅对报告照片中的样品负责

Pony authenticate the photo on original report only



Hotline 400-819-5688
www.ponytest.com
SZ-DZBGMB-105-3-2020A

谱尼测试集团深圳有限公司

公司地址: 深圳市宝安区福海街道桥头社区永和路鑫豪盛工业园 1 栋、2 栋 3 层
检测地址: 深圳市宝安区福海街道桥头社区永和路鑫豪盛工业园 1 栋、2 栋 3 层

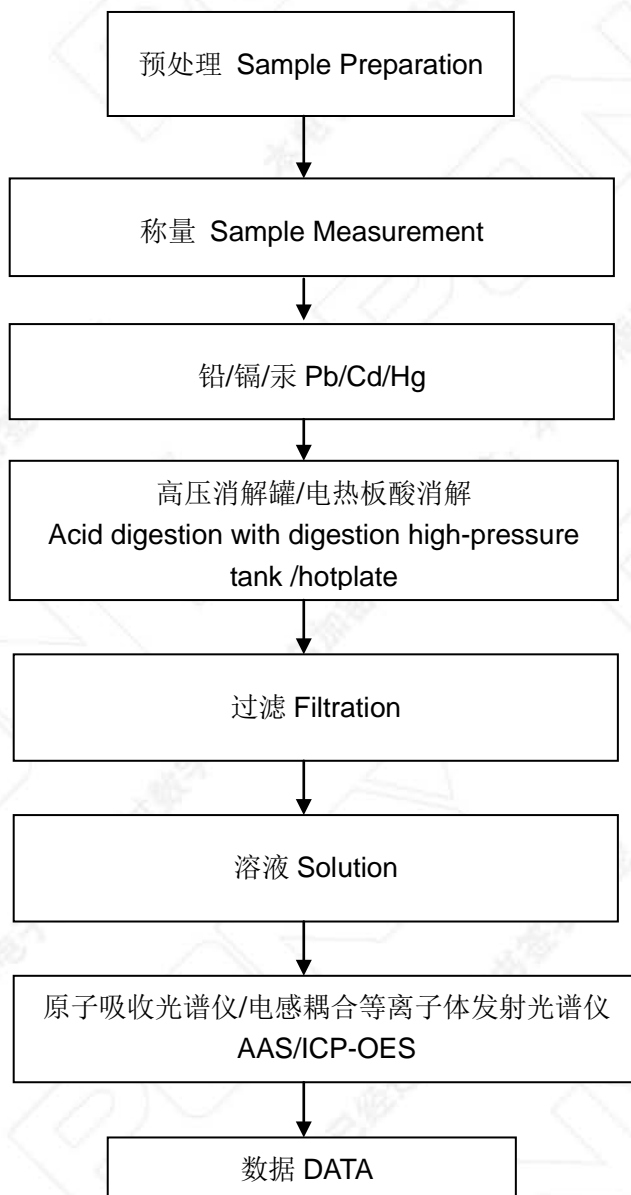
电话: 0755-26050909
传真: 0755-26068336



测试报告 (Test Report) 报告编号(NO.): MOCKONJJ56902704 签发日期(Issued Date): 2020-12-22 Page 3 of 3

流程图 Test Flow Chart

测试人员 Tested by: 熊程红 审核人 Checked by: 彭平平 实验室负责人 Person in charge of the lab: 毛祖青



报告结束 End of Report

