

# Test Report

Report No.: TS23080230R1



Verify authenticity

Applicant

Mid Ocean Brands B.V

Address

7/F., Kings Tower, 111 King Lam Street, Cheung  
Sha Wan, Kowloon, Hong Kong

Report Date

2023-08-23

Hangzhou C&K Testing Technic Co., Ltd.



Hangzhou C&K Testing Technic Co., Ltd

Add:1/F.No.4 Building, Huaye Hi-Tech Industrial Park, No.1180, Bin'an Road, Binjiang District, Hangzhou 310052, China  
Lab Add: 4/F No.3 and 1/F No.4 Building, Huaye Hi-Tech Industrial Park, No.1180, Bin'an Road, Binjiang District, Hangzhou 310052, China  
Hotline:4006-721-723 Tel:+86 571-8720 6535 Fax:+86 571-8990 0719 E-mail:test@cirs-group.com Website:www.cirs-ck.com

## Test Report

<b>Applicant</b>	Mid Ocean Brands B.V
<b>Address</b>	7/F., Kings Tower, 111 King Lam Street, Cheung Sha Wan, Kowloon, Hong Kong
<b>Sample Name</b>	ABS TROLLEY CASE
<b>Type/ Model</b>	M09178-03, M09178-05, M09178-37
<b>Material/Colour</b>	black
<b>Other Info.</b>	Your vendor code: 113098
The sample information included above and test component(s) are provided and confirmed by the applicant	
<b>Sample Received Date</b>	2023-08-07, 2023-08-11
<b>Test Period</b>	2023-08-07~ 2023-08-22
<b>Test Requirement</b>	To determine the following items in the submitted sample(s) according to the client's requirement.
<b>Remark</b>	This report is the revision of TS23080230, the original test report is invalid.

Test Item(s)	Test Result(s)
Lead(Pb) Content-Refer to the Annex XVII of Regulation (EC) No 1907/2006	Pass
Cadmium (Cd) Content-Refer to the Annex XVII of Regulation (EC) No 1907/2006	Pass
PAHs Content-Refer to the Annex XVII of Regulation (EC) No 1907/2006	Pass
Azo Dyes Content-Refer to the Annex XVII of Regulation (EC) No 1907/2006	Pass
Phthalates Content-Refer to the Annex XVII of Regulation (EC) No 1907/2006	Pass
Nickel Release- Annex XVII of Regulation (EC) No 1907/2006	Pass
Color Fastness to Rubbing	Pass

Prepared by: Meng Qi      Reviewed by: Li Xuefeng      Accredited Signatory by: Zhang Yangyang

Meng Qi
Li Xuefeng
Zhang Yangyang

Issue date: 2023-08-23

**Hangzhou C&K Testing Technic Co., Ltd**

Add:1/F,No.4 Building, Huaye Hi-Tech Industrial Park, No.1180, Bin'an Road, Binjiang District, Hangzhou 310052, China  
 Lab Add: 4/F No.3 and 1/F No.4 Building, Huaye Hi-Tech Industrial Park, No.1180, Bin'an Road, Binjiang District, Hangzhou 310052, China  
 Hotline:4006-721-723    Tel:+86 571-8720 6535    Fax:+86 571-8990 0719    E-mail:test@cirs-group.com    Website:www.cirs-ck.com

**Test Component(s):**

No.	Sample Serial No.	Test Component(s)	Type/Model	Material/Colour	Other Info.
001	TS23080230001	Silver Paint (on Handle)	/	/	/
002	TS23080230002	Black Plastic Trolley Handle (under Paint)+Black Plastic Cover+Black Plastic front Cover+Blue plastic cover+Red plastic cover	/	/	/
003	TS23080230003	Black Plastic Handle+Black Plastic Zipper Teeth+Grey Plastic Buckle+Grey lining zipper teeth	/	/	/
004	TS23080230004	Black Plastic Lock+Black Plastic Wheel Support	/	/	/
005	TS23080230005	Black Plastic Wheel Holder+Black Soft Plastic Handle+Black Soft Plastic Binding	/	/	/
006	TS23080230006	Black Soft Plastic Wheel	/	/	/
007	TS23080230007	Grey Elastic Band	/	/	/
008	TS23080230008	Black Zipper Fabric+Grey Lining+Grey lining zipper fabric	/	/	/
009	TS23080230009	Silver Metal Trolley Pole (Under Paint)	/	/	/
010	TS23080230010	Silver Metal Zipper Puller (Small)	/	/	/
011	TS23080230011	Silver Metal Zipper Slider (Small)	/	/	/
012	TS23080230012	Silver Metal Zipper Slider (Big)	/	/	/
013	TS23080230013	Silver Metal Zipper Puller (Big)	/	/	/
014	TS23080230014	Silver Metal Screw (on Trolley Pole)	/	/	/
015	TS23080230015	Silver Metal Pad(bottom)	/	/	/
016	TS23080230016	Black screw inside	/	/	/
017	TS23080230017	Black cylinder	/	/	/

**Hangzhou C&K Testing Technic Co., Ltd**

Add:1/F,No.4 Building, Huaye Hi-Tech Industrial Park, No.1180, Bin'an Road, Binjiang District, Hangzhou 310052, China  
 Lab Add: 4/F No.3 and 1/F No.4 Building, Huaye Hi-Tech Industrial Park, No.1180, Bin'an Road, Binjiang District, Hangzhou 310052, China  
 Hotline:4006-721-723 Tel:+86 571-8720 6535 Fax:+86 571-8990 0719 E-mail:test@cirs-group.com Website:www.cirs-ck.com

No.	Sample Serial No.	Test Component(s)	Type/Model	Material/Colour	Other Info.
018	TS23080230018	Grey plastic base	/	/	/
019	TS23080230019	Sliver metal badge	/	/	/
020	TS23080230020	Grey lining mesh fabric	/	/	/
021	TS23080230021	Grey lining zipper teeth	/	/	/
022	TS23080230022	Grey lining zipper fabric	/	/	/
023	TS23080230023	Silver Paint (on Handle)+Black Plastic Trolley Handle (under Paint)+Black Plastic Cover+Black Plastic front Cover+Blue plastic cover+Red plastic cover	/	/	/
024	TS23080230024	Grey plastic base+Grey Elastic Band	/	/	/
025	TS23080230025	Black Zipper Fabric+Grey Lining+Grey lining mesh fabric+Grey lining zipper fabric	/	/	/
026	TS23080230026	Black Plastic Handle+Black Soft Plastic Handle	/	/	/
027	TS23080230027	Black Plastic Trolley Handle (under Paint)+Black Plastic Cover+Blue plastic cover+Red plastic cover	/	/	/
028	TS23080230028	Grey Lining	/	/	/

**Photo(s):**



Overview



TS23080230001



TS23080230002 (Mixed)



TS23080230003 (Mixed)



TS23080230004 (Mixed)



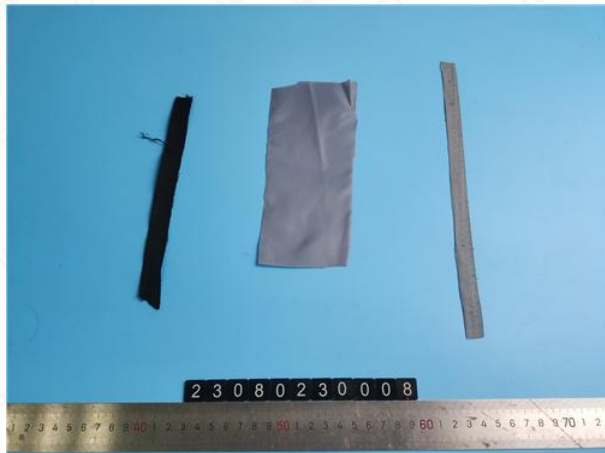
TS23080230005 (Mixed)



TS23080230006



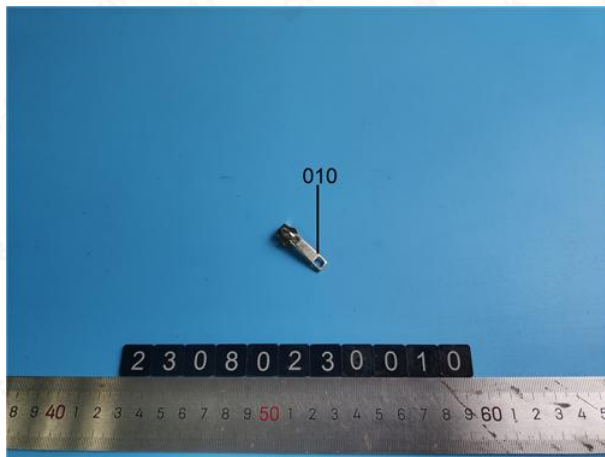
TS23080230007



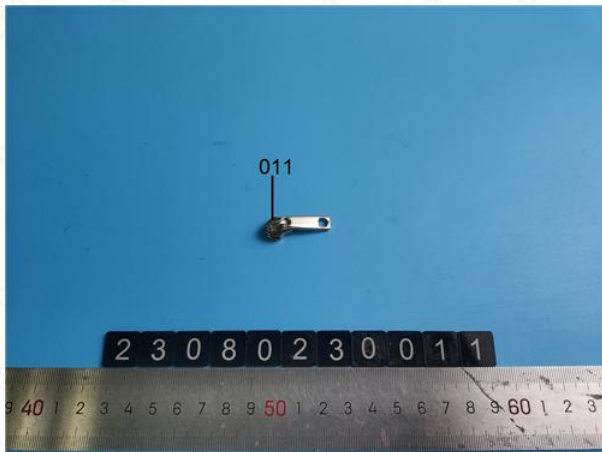
TS23080230008 (Mixed)



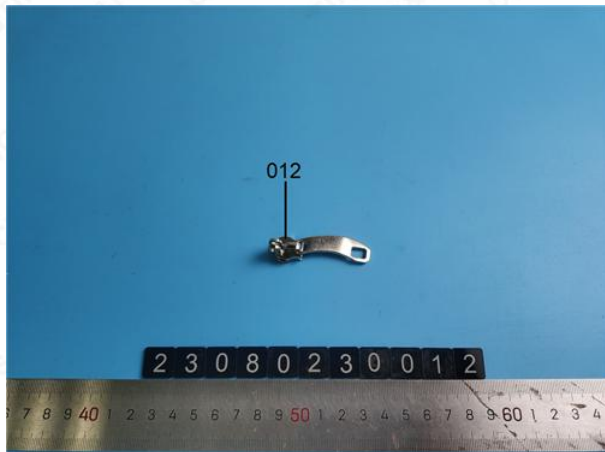
TS23080230009



TS23080230010



TS23080230011



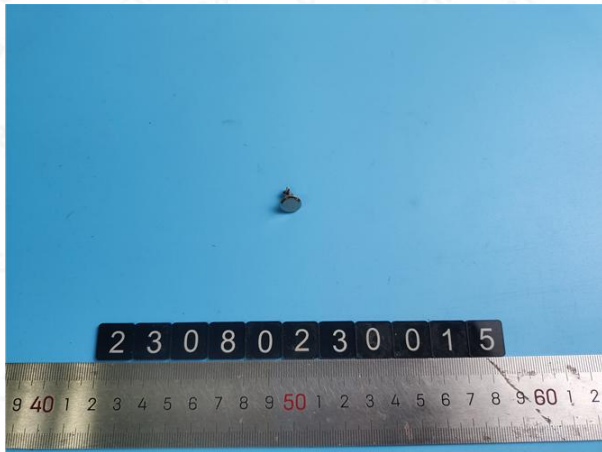
TS23080230012



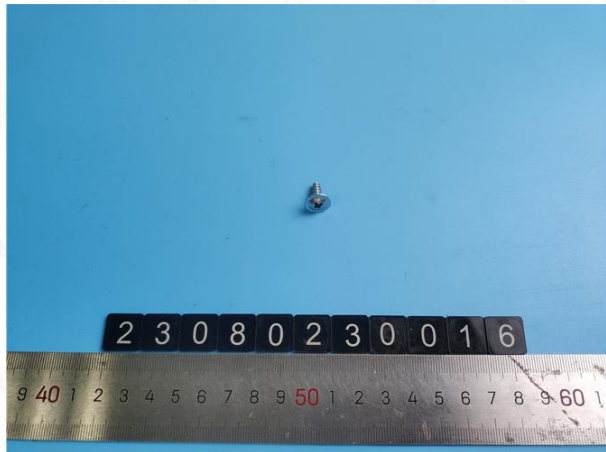
TS23080230013



TS23080230014



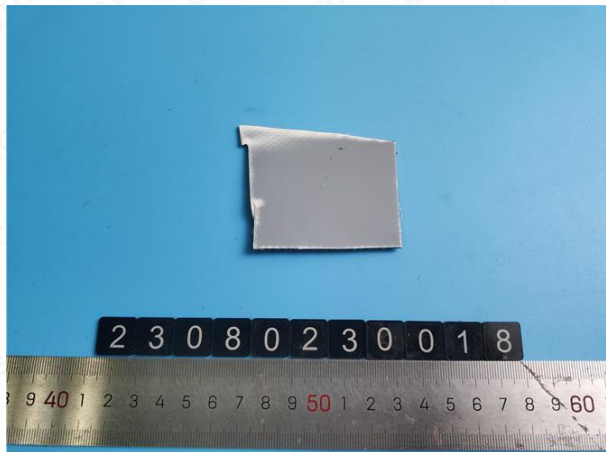
TS23080230015



TS23080230016



TS23080230017

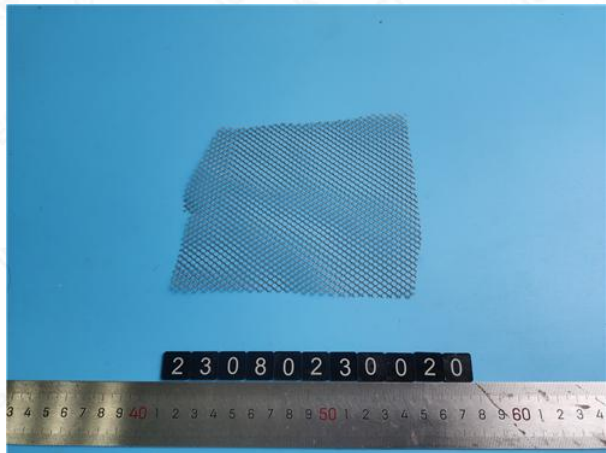


TS23080230018





TS23080230019



TS23080230020



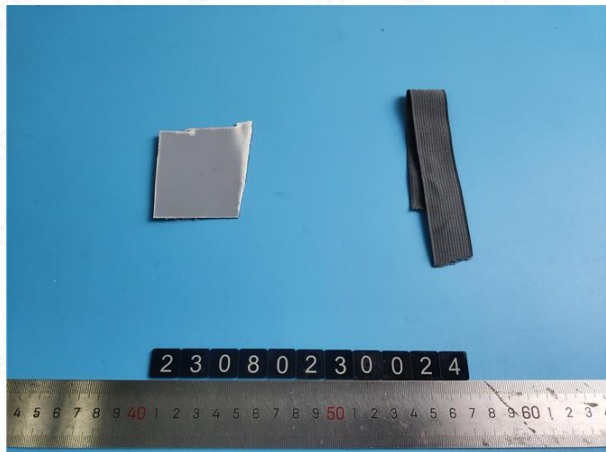
TS23080230021



TS23080230022



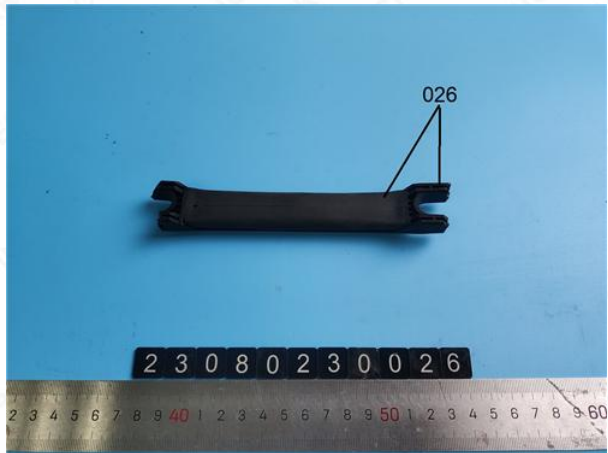
TS23080230023 (Mixed)



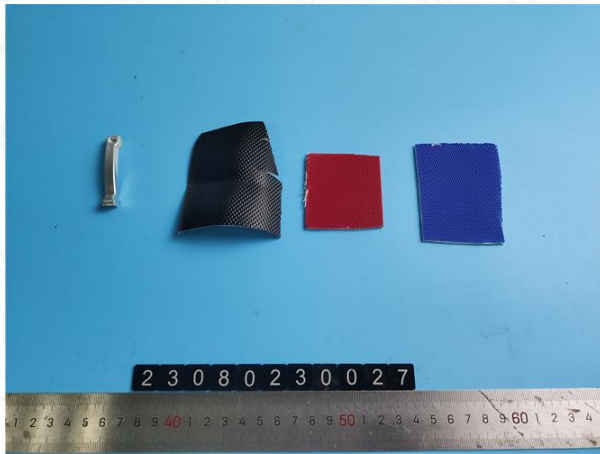
TS23080230024 (Mixed)



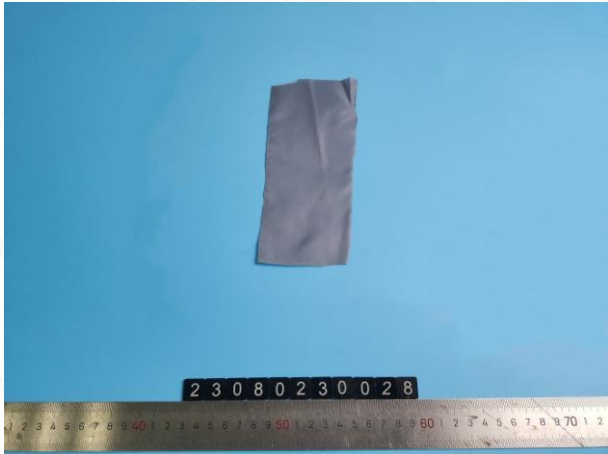
TS23080230025 (Mixed)



TS23080230026 (Mixed)



TS23080230027 (Mixed)



TS23080230028

**Test Result(s):**
**Lead(Pb) Content**

Test Item(s)	Test Method	Requirement	MDL	Unit	Test Result(s)			
					001	002	003	004
Lead(Pb)	EPA 3052:1996; EPA 6010D:2018	<500	5	mg/kg	N.D.	N.D.	N.D.	N.D.

Test Item(s)	Test Method	Requirement	MDL	Unit	Test Result(s)			
					005	006	007	008
Lead(Pb)	EPA 3052:1996; EPA 6010D:2018	<500	5	mg/kg	N.D.	31	N.D.	N.D.

Test Item(s)	Test Method	Requirement	MDL	Unit	Test Result(s)			
					018	020	021	022
Lead(Pb)	EPA 3052:1996; EPA 6010D:2018	<500	5	mg/kg	N.D.	N.D.	N.D.	N.D.

Test Item(s)	Test Method	Requirement	MDL	Unit	Test Result(s)			
					009	010	011	012
Lead(Pb)	EPA 3050B:1996; EPA 6010D:2018	<500	5	mg/kg	N.D.	N.D.	N.D.	N.D.

Test Item(s)	Test Method	Requirement	MDL	Unit	Test Result(s)			
					013	014	015	016
Lead(Pb)	EPA 3050B:1996; EPA 6010D:2018	<500	5	mg/kg	N.D.	N.D.	N.D.	N.D.

Test Item(s)	Test Method	Requirement	MDL	Unit	Test Result(s)	
					017	019
Lead(Pb)	EPA 3050B:1996; EPA 6010D:2018	<500	5	mg/kg	N.D.	N.D.

**Remarks:**

- MDL = Method Detection Limit; N.D. = Not detected (<MDL)

**Cadmium (Cd) Content**

Test Item(s)	Test Method	Requirement	MDL	Unit	Test Result(s)
					001
Cadmium(Cd)	EN 1122:2001	<1000	5	mg/kg	N.D.

Test Item(s)	Test Method	Requirement	MDL	Unit	Test Result(s)					
					002	003	004	005	006	024
Cadmium(Cd)	EN 1122:2001	<100	5	mg/kg	N.D.	N.D.	N.D.	N.D.	N.D.	N.D.

Remarks:

1. MDL = Method Detection Limit; N.D. = Not detected (&lt;MDL)

**PAHs Content**

Test Method: AfPS GS 2019:01 PAK

Test Item(s)	CAS No.	Requirement	MDL	Unit	Test Result(s)	
					026	027
Benzo (a) anthracene (BaA)	56-55-3	$\leq 1$	0.2	mg/kg	N.D.	N.D.
Benzo (a) pyrene (BaP)	50-32-8	$\leq 1$	0.2	mg/kg	N.D.	N.D.
Benzo (b) fluoranthene (BbF)	205-99-2	$\leq 1$	0.2	mg/kg	N.D.	N.D.
Benzo (e) pyrene (BeP)	192-97-2	$\leq 1$	0.2	mg/kg	N.D.	N.D.
Benzo (j) fluoranthene (BjF)	205-82-3	$\leq 1$	0.2	mg/kg	N.D.	N.D.
Benzo (k) fluoranthene (BkF)	207-08-9	$\leq 1$	0.2	mg/kg	N.D.	N.D.
Dibenzo (a,h) anthracene (DBA)	53-70-3	$\leq 1$	0.2	mg/kg	N.D.	N.D.
Chrysene (CHR)	218-01-9	$\leq 1$	0.2	mg/kg	N.D.	N.D.

Remarks:

1. MDL = Method Detection Limit; N.D. = Not detected (&lt;MDL)

**Azo Dyes Content**

Test Method: ISO 14362-1:2017

Test Item(s)	CAS No.	Requirement	MDL	Unit	Test Result(s)	
					007	025
2,4,5-Trimethylaniline	137-17-7	≤30	5	mg/kg	N.D.	N.D.
2,4-Diaminoanisole	615-05-4	≤30	5	mg/kg	N.D.	N.D.
2,4-Toluylenediamine	95-80-7	≤30	5	mg/kg	N.D.	N.D.
P-Cresidine	120-71-8	≤30	5	mg/kg	N.D.	N.D.
2-Naphthylamine	91-59-8	≤30	5	mg/kg	N.D.	N.D.
4,4'-Methylenedi-O-Toluidine	838-88-0	≤30	5	mg/kg	N.D.	N.D.
3,3'-Dimethylbenzidine	119-93-7	≤30	5	mg/kg	N.D.	N.D.
3,3'-Dimethoxybenzidine	119-90-4	≤30	5	mg/kg	N.D.	N.D.
3,3'-Dichlorobenzidine	91-94-1	≤30	5	mg/kg	N.D.	N.D.
4,4'-Diaminodiphenylmethane	101-77-9	≤30	5	mg/kg	N.D.	N.D.
4,4'-Thiodianiline	139-65-1	≤30	5	mg/kg	N.D.	N.D.
4,4'-Oxydianiline	101-80-4	≤30	5	mg/kg	N.D.	N.D.
4,4' -Methylene-Bis-(2-Chloro-Aniline)	101-14-4	≤30	5	mg/kg	N.D.	N.D.
4-Aminobiphenyl	92-67-1	≤30	5	mg/kg	N.D.	N.D.
4-Aminoazobenzene	60-09-3	≤30	5	mg/kg	N.D.	N.D.
4-Chloro-O-Toluidine	95-69-2	≤30	5	mg/kg	N.D.	N.D.
5-Nitro-o-Toluidine	99-55-8	≤30	5	mg/kg	N.D.	N.D.
4-Chloroaniline	106-47-8	≤30	5	mg/kg	N.D.	N.D.
Benzidine	92-87-5	≤30	5	mg/kg	N.D.	N.D.
O-anisidine	90-04-0	≤30	5	mg/kg	N.D.	N.D.
O-aminoazotoluene	97-56-3	≤30	5	mg/kg	N.D.	N.D.
O-toluidine	95-53-4	≤30	5	mg/kg	N.D.	N.D.

Remarks:

1. MDL = Method Detection Limit; N.D. = Not detected (&lt;MDL)

**Phthalates Content**

Test Item(s)	Test Method	Requirement	MDL	Unit	Test Result(s)		
					003	004	005
Butylbenzylphthalate(BBP)	EN 14372:2004	/	0.001	%	N.D.	N.D.	N.D.
Di-(2-ethylhexyl)-phthalate(DEHP)	EN 14372:2004	/	0.001	%	N.D.	N.D.	N.D.
Dibutylphthalate(DBP)	EN 14372:2004	/	0.001	%	N.D.	N.D.	N.D.
Diisobutyl phthalate(DIBP)	Refer to EN 14372:2004	/	0.001	%	N.D.	N.D.	N.D.
SUM (DIBP+DBP+BBP+DEHP)	EN 14372:2004	<0.1	0.004	%	N.D.	N.D.	N.D.
Di-iso-decylphthalate(DIDP)	EN 14372:2004	/	0.005	%	N.D.	N.D.	N.D.
Di-iso-nonylphthalate(DINP)	EN 14372:2004	/	0.005	%	N.D.	N.D.	N.D.
Di-n-octyl phthalate(DNOP)	EN 14372:2004	/	0.001	%	N.D.	N.D.	N.D.
SUM (DNOP+DINP+DIDP)	EN 14372:2004	<0.1	0.011	%	N.D.	N.D.	N.D.

Test Item(s)	Test Method	Requirement	MDL	Unit	Test Result(s)		
					006	023	024
Butylbenzylphthalate(BBP)	EN 14372:2004	/	0.001	%	N.D.	N.D.	N.D.
Di-(2-ethylhexyl)-phthalate(DEHP)	EN 14372:2004	/	0.001	%	0.024	N.D.	0.061
Dibutylphthalate(DBP)	EN 14372:2004	/	0.001	%	N.D.	N.D.	N.D.
Diisobutyl phthalate(DIBP)	Refer to EN 14372:2004	/	0.001	%	N.D.	N.D.	N.D.
SUM (DIBP+DBP+BBP+DEHP)	EN 14372:2004	<0.1	0.004	%	0.024	N.D.	0.061
Di-iso-decylphthalate(DIDP)	EN 14372:2004	/	0.005	%	N.D.	N.D.	N.D.
Di-iso-nonylphthalate(DINP)	EN 14372:2004	/	0.005	%	N.D.	N.D.	N.D.
Di-n-octyl phthalate(DNOP)	EN 14372:2004	/	0.001	%	N.D.	N.D.	N.D.
SUM (DNOP+DINP+DIDP)	EN 14372:2004	<0.1	0.011	%	N.D.	N.D.	N.D.

Remarks:

1. MDL = Method Detection Limit; N.D. = Not detected (&lt;MDL)

**Nickel Release**

Test Method: EN 12472:2020+EN 1811:2023(E)

Test Item(s)	Sample Area (cm <sup>2</sup> )	Volume of Test Solution (mL)	Limit (µg/cm <sup>2</sup> /week)	Nickel Release (µg/cm <sup>2</sup> /week)
				010
Nickel Release	2.3	10.0	≤0.5	<0.1

Remark:

For each replicate measurement, the nickel release value

Replicate No.	Nickel Release (µg/cm <sup>2</sup> /week)
010-A	<0.1
010-B	<0.1
010-C	<0.1

Test Item(s)	Sample Area (cm <sup>2</sup> )	Volume of Test Solution (mL)	Limit (µg/cm <sup>2</sup> /week)	Nickel Release (µg/cm <sup>2</sup> /week)
				013
Nickel Release	6.5	10.0	≤0.5	<0.1

Remark:

For each replicate measurement, the nickel release value

Replicate No.	Nickel Release (µg/cm <sup>2</sup> /week)
013-A	<0.1
013-B	<0.1
013-C	<0.1

**Nickel Release**

Test Method: EN 12472:2020+EN 1811:2023(E)

Test Item(s)	Sample Area (cm <sup>2</sup> )	Volume of Test Solution (mL)	Limit (µg/cm <sup>2</sup> /week)	Nickel Release (µg/cm <sup>2</sup> /week)
				019
Nickel Release	16.5	25.0	≤0.5	<0.1

Remark:

For each replicate measurement, the nickel release value

Replicate No.	Nickel Release (µg/cm <sup>2</sup> /week)
019-A	<0.1
019-B	<0.1
019-C	<0.1

**Color Fastness to Rubbing**

Test Item(s)		Test Method	Requirement	Unit	Test Result(s)		
					007	020	028
Color Fastness to Rubbing	Dry	EN ISO 105-X12:2016	≥3	Grade	4-5	4-5	4-5
	Wet		≥3	Grade	4-5	4-5	4-5

Remarks:

1. Source Light: D65
2. Grade 1– The Worst, Grade 3- Middle Grade, Grade 5– The Best



**Statement:**

- I This report is invalid without the signature of accredited signatory. Any alteration to this report is also invalid.
- II This report is invalid without the special seal of inspection & testing.
- III This report shall not be part copy without written approval of Hangzhou C&K Testing Technic Co., Ltd..
- IV Any commercial activity such as advertising or propaganda is not allowed without authorization of Hangzhou C&K Testing Technic Co., Ltd..
- V The test results shown in this report refer only to the sample submitted by applicant.
- VI Please respond to Hangzhou C&K Testing Technic Co., Ltd. within fifteen working days upon receipt of this report if there is any objection.
- VII Hangzhou C&K Testing Technic Co., Ltd. guarantee that we shall not disclose information such as the commercial information, technical documents or test report to any third party.
- VIII The applicant should undertake the legal responsibility that result from providing untruth information.
- IX This report is only for scientific research, teaching, internal quality control of enterprises, etc without the seal of China Metrology Accreditation.
- X The quantity of the sample does not meet the requirements of retest and arbitration, it shall be regarded as the customer waiving the right of retest and arbitration.

\*\*\*The end of report\*\*\*